



Jointing Details for saveBOARD Products



About saveBOARD

saveBOARD is focused on building a circular economy by turning composite packaging waste back into products that re-enter the local supply chain eliminating future waste. We have two plants; one in Hamilton, New Zealand and one in South-Western Sydney, Australia.

The core of the product is made from shredded and compressed composite packaging, giving the user a sustainable and superior performing product. For use with timber framing.

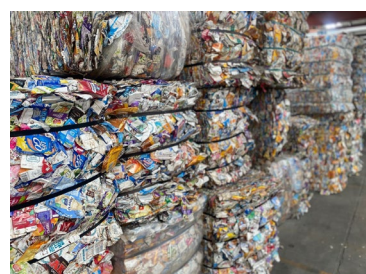
When our standard products are cut, they can leave a fibrous edge, that will require sanding. If a hard edge is required betterJOINERY is recommended.

Our products are finished with either a recycled facing paper (Paperfaced), fibreglass face (betterBRACE) or a LDPE top surface (Exposed, Ceiling Tiles, Multi-use). All products have a recycled facing paper on bottom surface. saveBOARD products are alternatives to plywood, OSB, MDF, or plasterboard.

Manufacturing Locations:

30 Sunshine Ave, Te Rapa, Hamilton 3200, New Zealand. www.saveboard.nz

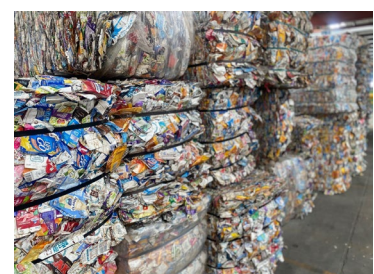
15 Production Ave, Warragamba, NSW 2752, Australia. www.saveboard.com.au

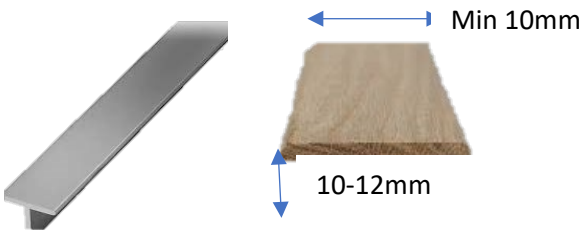


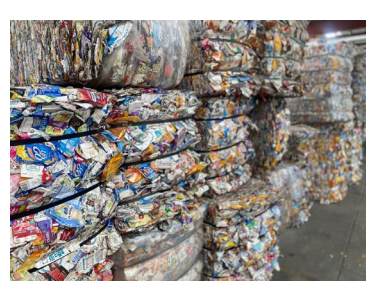
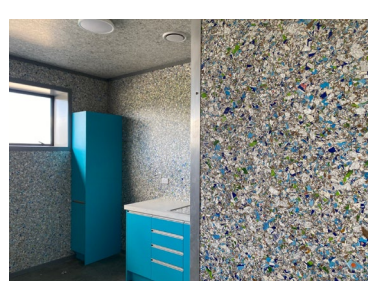
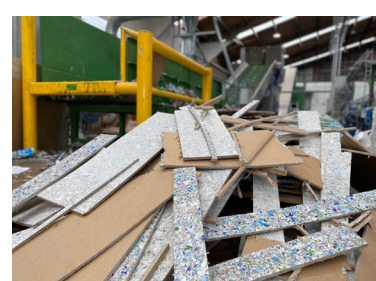
Choosing the Right Product

Key to any application is choosing the right product for the right job. The table below, provides a summary of products, jointing or cutting technique along with notes and instructions. All saveBOARD products need to be cut or shaped with common wood working tools – same as what you would use for cutting plywood. For best results use a high tooth count saw blades and sand edges as needed.

Requirement	saveBOARD Product	Notes / Instructions
CNC Cutting	betterJOINERY	High density. Use compression head cutting tool, 3,000rpm recommend cutting speed.
Mitre Edges	betterJOINERY	High density. Cut with a skill saw or bench saw.
Negative Detail	Exposed or Multi-use	2mm to 10mm gap. 3mm arris of edge. Paint studs and the exposed edge of the board.
Arris Edge	Paperfaced Square Edge	3mm arris of edge, painted finish and accept the natural textured surface. For a flat finish a Level 5 finish is required for Paperfaced. If selecting a Level 4, you will see the difference between the surface texture of the product and the flat lines of the plastered areas.
Tapered Edge	Paperfaced	Tape and plaster the edge.
Curved walls	Exposed or Paperfaced	150mm minimum radius. Kerf bending required. Cuts to 50% depth at 20mm intervals. Glue kerf cuts or fix to studs to allow curve to set in position.
Butt Joint* <i>*Only use a hard Butt Join on Exposed products in humidity-controlled environments. Otherwise, 2-4mm gap is recommended between sheets.</i>	<u>Wall Lining</u> Exposed*, Paperfaced or Multi-use	Cut boards upside down so skill saw leaves a clean cut on front face. Sand back edge with 150grit paper. Fix with glue and finishing gun, 35-40mm panel pins or collated drywall screw gun. The butt joint on Exposed or Multi Use internal lining can be sealed by applying

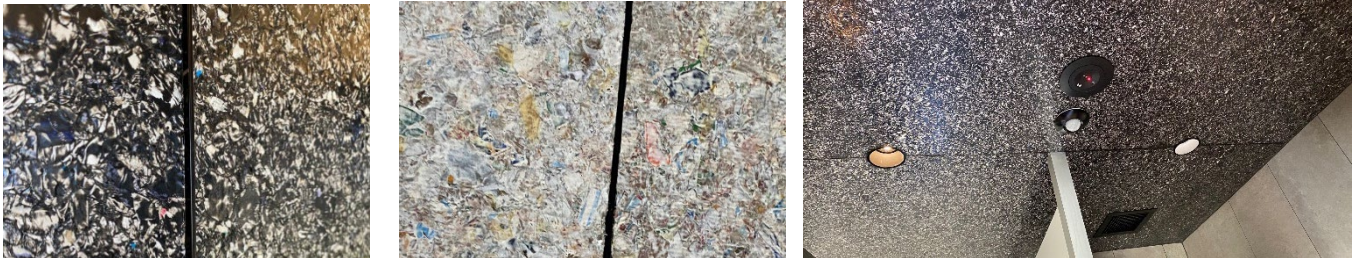


	<p><u>External Hoarding</u></p> <p>Multi Use</p>	<p>clear Selleys 'Liquid Nails' or Sikabond contact adhesive.</p> <p>Only use Multi Use as an internal wall lining in industrial, well-ventilated spaces such as warehouse and sheds or large format open areas. Multi Use has a very slight odour that may be noticeable in a confined space.</p> <p>Seal all exposed and cut edges.</p>
Covered Joint	Exposed, better JOINERY	<p>Use a 10-12mm timber or aluminium T-bar extrusion, fix over the joint using high strength construction adhesive.</p> 
Splash zones only (not suitable for wet areas)	Exposed, better JOINERY, Multi Use	<p>Paint edges with household acrylic primer. Run silicon bead in between board joint for added waterproofing.</p>
High Traffic Areas	Exposed, Multi Use or better JOINERY	<p>Pre-finished panels are inherently mark resistant, impact resistant, durable and are suitable for high contact areas. Low maintenance, wipe down surface.</p>
	Paperfaced	<p>Impact resistant, durable and suitable for high contact areas.</p>
External Hoardings	Multi Use	Butt join.
Internal Hoardings	Multi Use	Butt join.



Negative Detail:

The finishing of a negative detail is key for the aesthetics of the finished product. At saveBOARD we recommend a 2mm to 10mm gap. The Exposed board should be glued and panel pinned (or screwed) into position. The studs and board edge can be painted or alternatively a silicon or aluminium joint applied to the recess.



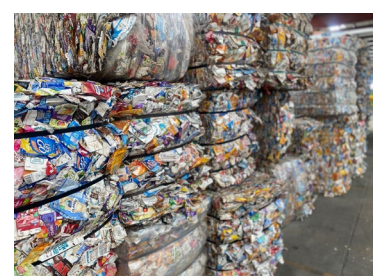
Aluminium Extrusions

All 10mm aluminium extrusions available for plasterboard can be used for saveBOARD pre-finished panels. The aluminium extrusions can be finished by either leaving the aluminium natural, coloured by painting or powder coating.



Ullrich Aluminium Wallboard Codes:

Extrusion	DIE No.	Dimensions	Type
10MM CAPPING	UA4405	23.00 x 13.40	Wallboard Capping
10MM EXT CORNER	UA4407	33.40 x 28.40	Wallboard External Corners
10MM INT CORNER	UA4408	31.51 x 23.51	Wallboard Internal Corners
10MM JOINTER	UA4406	34.00 x 13.40	Wallboard Jointers



Butt Joints*:

All butt joints whether Exposed, Paperfaced internal linings or Multi-use panels should be glued and fixed around the circumference and centre of each panel.

When cutting saveBOARD products, especially Exposed internal linings, we recommend cutting from the back, so the saw blade leaves a sharp front edge, and any burring is on the back of the board. Alternatively using a masking tape will help control the finished edge.

**Only use a hard Butt Join in humidity-controlled environments. Otherwise, 2-4mm gap is recommended between sheets to allow for any humidity induced deflection or expansion of sheets.*

Options for Butt Joints include:

Arris Edge – If you want to maintain the textured surface of Paperfaced, instead of traditional 'Stopping & Painting Finish', we recommend finishing our square edge Paperfaced internal linings with a small chamfer (Arris). The surface can be sealed and painted without the need for stopping, saving both time and money.

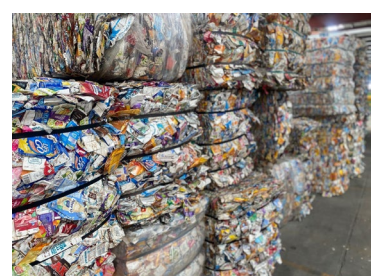
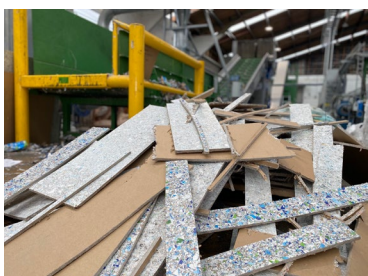
Square – There are several ways to finish a square butt joint depending on aesthetics and whether it is a high traffic zone or not. Options include:

- Fixed joint, glued and panel pinned (or screwed) to stud or back blocked.
- The butt joint on Exposed internal lining or Multi-use Panels can be sealed by applying a contact adhesive at join. Care must be taken to remove the excess adhesive – use masking tape or similar.

Exposed Edges

We do not recommend you leave the edge of any saveBOARD products exposed. For further detail see the relevant product installation guide.

Product	Application	Install recommendation
Exposed and Multi-Use	<u>Wall lining</u>	
	Exterior corners	Extrusion, jointer or silicon
	Internal Corners	Butt join and silicon
	Top Edge	Butt to the ceiling lining or use architrave.
	Bottom Edge	Use an extrusion or skirting to protect the edge.
Paperfaced	<u>Painted Wall lining</u>	



	Exterior corners Internal Corners Top Edge Bottom Edge	Metal corner and plastered Taped and plastered Square stop or use architrave Skirting will protect the edge
Multi-Use	External Hoardings	Seal all exposed and cut edges

ADDITIONAL INFORMATION

saveBOARD is committed to a sustainable future. We hold many of the common industry environmental certifications & labels. Ultimately, we can provide transparency to our clients and customers on how we make our saveBOARD products. Please refer to our website for details:

NZ Customers: <https://www.saveboard.nz/certifications-labels>

AU Customers: <https://www.saveboard.com.au/certifications-labels>

Designing Out Waste

We are focused on several initiatives that design out waste in the built environment, these include:

💰 Free Return Service: Send back off-cuts and end-of-life products to be remanufactured into new materials. It costs less than landfill and better for the planet.

✂️ Cut-to-Length Service: Only pay for what you need, saving money and reducing on-site labour for cutting sheets.

🗑️ Recycling Manufacturing Waste: Our side trimmings and reject boards are continuously recycled into new saveBOARD products, its just something we do.

🌍 Soft Plastics Recycling: We offer free soft plastics recycling to all our clients, providing a comprehensive site-wide solution not just saveBOARD focused.

